

Employer Partner Information

An introduction on the business case for the organization, CCDI's mandate, and what it means to be a CCDI Employer Partner.



Canadian Centre for Diversity and Inclusion
Centre canadien pour la diversité et l'inclusion

Our story

About CCDI:

- The Canadian Centre for Diversity and Inclusion is a unique national charity that that promotes diversity and inclusion in Canadian workplaces.
- Our mission is to help our Employer Partners and individual members achieve significant differences in their organizational performance by providing them with the tools, knowledge and information, and education to create more inclusive workplaces in Canada.

Canadian Centre for Diversity and Inclusion (CCDI).

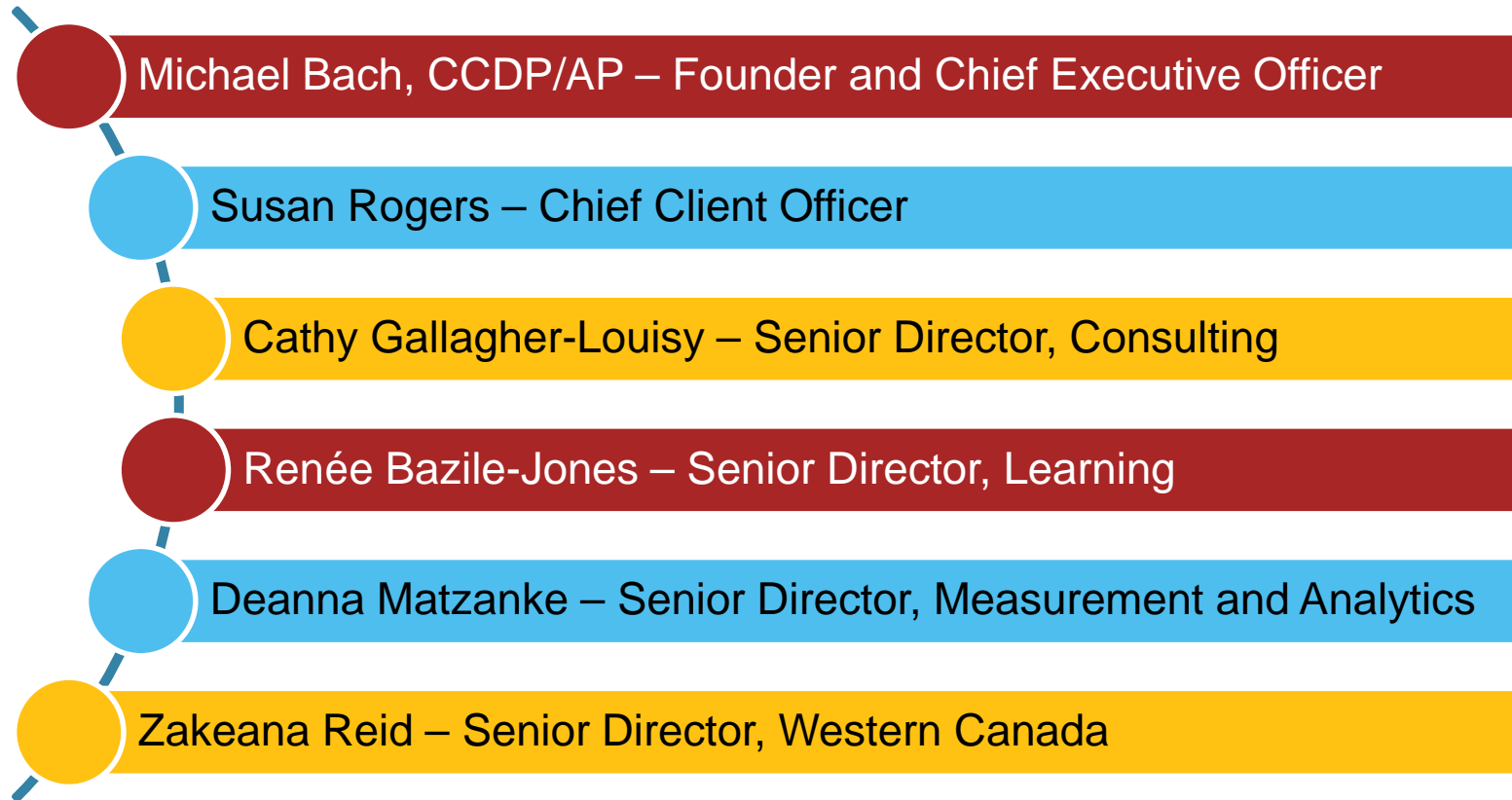
- A unique national charity that promotes diversity and inclusion (“D&I”) in places of work.
- The trusted advisor on workplace diversity and inclusion, setting the standard for D&I as a profession in Canada.
- There is no other organization in Canada like CCDI, and no other organization can rival our national reach and scope.
- Over 150 valued Employer Partners across Canada.

Canadian Centre
for Diversity and
Inclusion

CCDI Consulting
Inc.

Mayagwe

Who are we?



Plus CCDI Team Members, Ambassadors & Associates.

What is it?

The vision of the Canadian Centre for Diversity and Inclusion (CCDI) is to be the trusted advisor for diversity and inclusion, human rights and equity and human resources practitioners, and the most recognized organization for diversity and inclusion in Canada's workplaces.

CCDI is:

Helping our employer partners along their diversity journey with sustainable and relevant subject matter expertise.

Working to certify practitioners as Canadian Certified Inclusion Professionals, ensuring a standard of knowledge in the industry.

Acting as a knowledge repository and think tank.

Providing guidance and leadership on legislative compliance.

Our services

How does CCDI help employers?

CCDI products:



Knowledge Repository



Reports and toolkits



Measurement & Analytics

CCDI services:



Consulting
services



Research



Employment Equity
practitioners group
(EEPG)



Workshops
and training



Legislative
support



Speaking
engagements

CCDI events:



Webinars



Community of practice
events



D&I: The UnConference



Diversity Nexus

Our Employer Partners

What do employers receive by being an Employer Partner?

Employer Partner benefits:

Unlimited
access to:

- ✓ Community of Practice Events
- ✓ Monthly webinars
- ✓ Any research created by CCDI
- ✓ Our exclusive knowledge repository
- ✓ Access to our exclusive database of community partners.

15%
discount on:

- ✓ All CCIP certifications
- ✓ All training programs, including the development of any intact specific training and solutions
- ✓ All consulting and legislative support services

Employer Partner benefits:



Public recognition on the CCDI website, communications and materials.



Use of the CCDI brand on Employer Partner's website and materials.



4 passes to the CCDI annual conference and a 15% discount on additional purchased passes.

Employer Partner fees:

For profit employers:

\$7,500
annually

National Partners: Employer partners operating in multiple jurisdictions across Canada.

\$4,000
annually

Provincial Partners: Employer partners operating in one provincial or territorial jurisdiction only.

Not-for-profit and public sector employers :

\$5,000
annually

Federal Public Sector: Public Sector organizations operating at the Federal level, with operations in more than one jurisdiction across Canada.

\$3,000
annually

Provincial or Municipal Public Sector: Public Sector organizations operating at the Provincial or Municipal level, with operations in one jurisdiction across Canada.

★ Employer partners are asked to make a three year commitment.

Founding Employer Partners:

CCDI wishes to acknowledge and thank our Founding Employer Partners, without whose continue support we would not exist.



Employer Partners:

- ADP
- AECON
- Air Canada
- Alberta Health Services
- Alectra Utilities
- Alliance Pipeline
- Aon
- Atlantic Lottery
- BC Housing
- BCLC
- The Beer Store
- BHP
- Blake, Cassels & Graydon LLP
- Borden Ladner Gervais LLP
- British Columbia Institute of Technology
- Business Development Bank of Canada
- Cambrian College
- Canadian Air Transport Security Authority
- Canadian Blood Services
- Canadian Mental Health Association
Waterloo Wellington
- Canadian Nuclear Laboratories
- Canadian Western Bank
- Children's Aid Society of Toronto
- City of Guelph
- City of Mississauga
- City of Moncton
- City of Oshawa
- City of Regina
- City of Saskatoon
- CN

Employer Partners:

- Computershare
- Conestoga College Institute of Technology & Advanced Learning
- Corus Entertainment
- CUPS Calgary
- Davies Ward Phillips and Vineberg LLP
- Defence Construction Canada
- Dell EMC
- Dentsu Aegis Network
- Douglas College
- Durham Children's Aid Society
- Durham Regional Police Service
- Eli Lilly Canada
- Enbridge Inc.
- ENMAX Corporation
- Enterprise Holdings
- Export Development Canada
- Farm Credit Canada
- Georgian College
- GEVC
- Goldcorp Inc.
- Government of Alberta
- Habitat for Humanity Greater Toronto Area
- Halifax Regional Municipality
- Halton Regional Police Service
- Holland Bloorview Kids Rehabilitation Hospital
- The Home Depot
- Hydro Ottawa
- IBM
- Imperial
- Ipsos

Employer Partners:

- Kwantlen Polytechnic University
- Law Society of Upper Canada
- Loblaw Companies Limited
- Manitoba Liquor and Lotteries
- Manulife
- Maple Leaf Foods
- McDonalds Canada
- Meridian Credit Union
- Miller Thomson LLP
- Mount Royal University
- The Municipal Infrastructure Group
- Nalcor Energy
- NAV CANADA
- Niagara Casinos
- Nova Scotia Community College
- Ontario College of Trades
- Ontario Lottery and Gaming Corporation
- Ontario Power Generation
- Ontario Provincial Police
- Ottawa Police Service
- Peel District School Board
- Peel Regional Police
- Pembina Pipeline Corporation
- PepsiCo Foods Canada
- Purolator Inc.
- Regional Municipality of Peel
- The Regional Municipality of York
- Rockwell Automation
- Rogers Communications
- Royal Ontario Museum

Employer Partners:

- RSA Canada
- Saanich Police Department
- Saskatchewan Polytechnic
- SaskEnergy
- Saskpower
- SaskTel
- Seneca College
- Shell Canada Limited
- Sinai Health System
- SmartSimple Software Inc.
- Sobeys Inc.
- Softchoice
- Stantec
- Starbucks Canada
- Stewart McKelvey
- Suncor Energy
- TD
- TELUS
- Toronto Transit Commission
- Town of Ajax
- Toyota Motor Manufacturing Canada Inc.
- TransCanada
- Trican Well Service
- Union Gas
- University of Alberta
- University of Ontario Institute of Technology
- University of Toronto
- Visa
- Windsor Police Service

Thank You

Name

Title

firstname.lastname@ccdi.ca



Canadian Centre for Diversity and Inclusion
Centre canadien pour la diversité et l'inclusion